

# Applied Zoology

## BSc (Hons)

STUDY MODE  
Full time / Part time

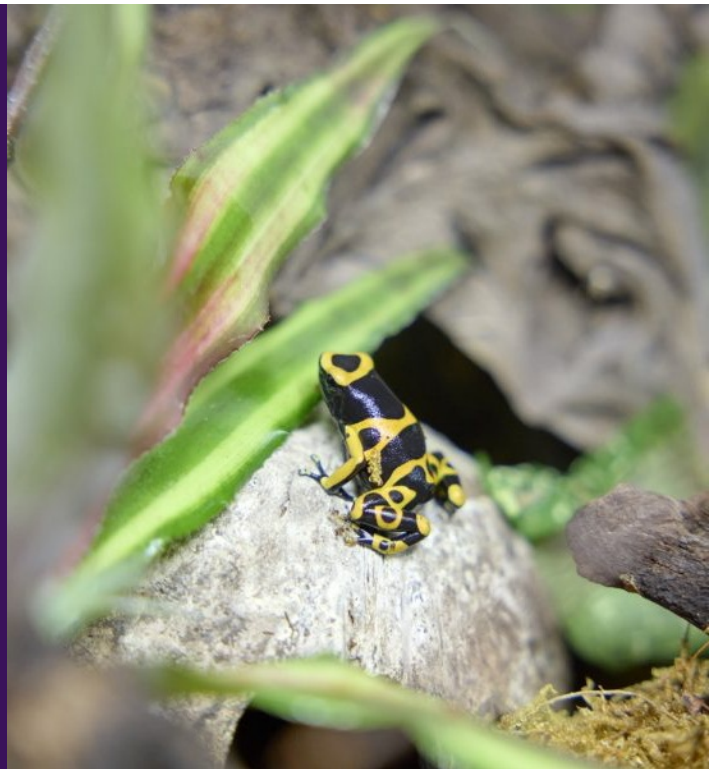
LOCATION  
Moulton

LEVEL  
Level 6

START DATE  
Sept 2025

DURATION  
3 years / 5 years

AWARDING BODY  
University of  
Northampton



Our BSc Applied Zoology course is the scientific study of all aspects of animal life.

This course will enable you to explore not only our planet's stunning biodiversity, but also the evolutionary processes behind it all as well as the challenges we face in conserving it.

You will explore a variety of topics ranging from ecology, animal behaviour, animal welfare, genetics and evolution, investigate and discuss the role of Zoos and Aquaria in the 21st century and explore the modern methods of investigation across a range of zoological disciplines.

We offer a range of facilities that you will use throughout your studies, including our extensive estate of farmland, our Animal Welfare Centre, which houses over 137 different species from a variety of taxonomic groups and our biosciences laboratory. These facilities are utilised to support the practical, hands-on learning experiences to enhance your studies.

We also have links with a wide range of animal organisations, such as Woburn Safari Park, Colchester Zoo, The Raptor Foundation, Yorkshire Wildlife Park, RSPCA, Woodgreen Animal Shelter and Twycross Zoo.

## What will I learn on the course?

During the first year of this course you will develop the building blocks of animal anatomy & physiology, genetics, animal behaviour, ecology and biology along with developing your study skills in higher education.

This sets you up for second year where these subjects are developed further. In the second year there is scope\* to choose between Field Ecology and Field course modules. This brings you to the third and final year where you explore the current research in zoology and advances in wildlife conservation as well as completing your dissertation in a research topic of your choice.

Full details about what you will study can be found in the [Award Map](#).

*\* The availability of choices may vary from year to year and will be subject to minimum student numbers being achieved. This means that the availability of specific optional modules cannot be guaranteed. Optional module selection may also be affected by staff availability.*

## What will this course cost me?

For information about course fees please refer to our [Fees and Financial Support](#) pages.

## How will I be assessed?

The course is assessed through a range of assessments including written assignments, poster presentations, seminar presentations, portfolios, exams and project work. The course is mostly assessed through individual assessments, but elements of group work may be incorporated to bring in a real-world learning experience. At Level 6 you are also required to complete a dissertation project.

Our variety of assessment methods, providing students with an increased chance of success, have been commended by external examiners.

## Where can it lead to?

This is a course with a range of exciting opportunities to move into employment in zoology-related positions.

Potential graduate careers could include Zoo Keepers, Animal Technicians, Research Assistants, Ecologists, Natural History Collection Technicians and much more.

There is also great potential to move onto further studies in animal sciences at Master's and PhD level.

## What are the entry requirements for this course?

Please see the typical offer list below. A wide range of qualifications are accepted. Applicants may also be offered a place on the basis of their experience and we would welcome applications from mature students or people currently working in industry who are seeking Continuing Professional Development or part time opportunities

Qualification	Grade Profile	UCAS Tariff Points
BTEC Extended Diploma	MMM	96 points
BTEC Diploma	DD	96 points
A-Levels	CCD	88 points and a Grade 4 (C) or above in GCSE maths (or equivalent)
International Baccalaureate		24 points
Scottish Highers	CCD	57 points
Higher Irish Leaving Certificate	B1/B2/B3	78 points

We also have [Access to Higher Education](#) course options which can support you in gaining the qualifications required for a degree level programme.

### International Students

If you are an international student looking to study this course please contact our [Student Services team](#) to check the entry requirements for details on country specific entry requirements.

## Good to know

The UCAS code for this course is C300.

Visit this course on our website: <https://www.moulton.ac.uk/courses/pbhaz/applied-zoology-bsc-hons-level-6>

For further information please contact the college: <https://www.moulton.ac.uk/contact>

