

Animal Behavioural Science & Welfare (Top Up)

BSc (Hons)

STUDY MODE
Part time

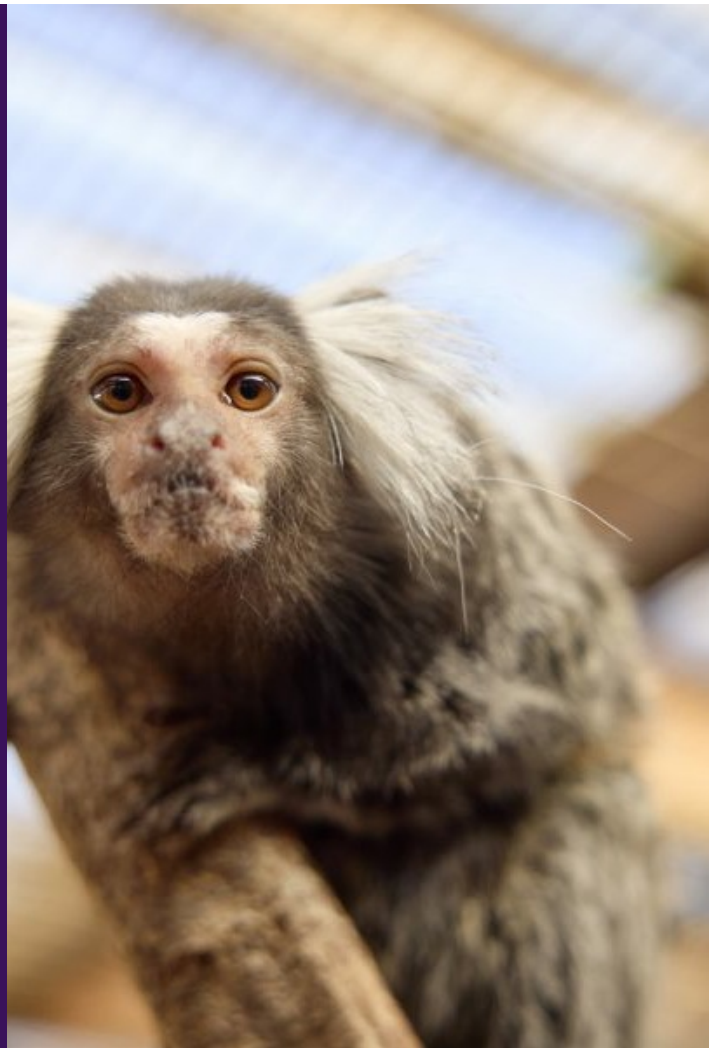
LOCATION
Moulton

LEVEL
Level 6

START DATE
Sept 2025

DURATION
2 years

AWARDING BODY
University of Northampton



This top-up course enables students who have already completed an FdSc or HND in a related subject to convert to a full BSc (Hons).

Suitable for anyone wishing to work with animals this course will give you the knowledge and expertise to enter a wide range of professions in this area.

Our on-site facilities include a working farm, Animal Welfare Centre, Equine Yard and Veterinary Practice, where you can gain hands-on commercial experience alongside your studies.

We also have links with a wide range of animal organisations, such as Woburn Safari Park, Colchester Zoo, The Raptor Foundation, Yorkshire Wildlife Park, Dodson and Horrell Feed Specialists, RSPCA, Woodgreen Animal Shelter and Twycross Zoo.

What will I learn on the course?

This course enables students who have already completed an FdSc or HND in a related subject to convert to a full BSc (Hons).

Designed to enable you to understand and apply the principles of animal management and husbandry whilst specialising in streams that open up opportunities to a range of job markets and conducting your own individual piece of research.

This course allows you to specialise in two optional streams from: Zoo Management & Conservation, Animal Health or Animal Behaviour and Welfare. Alongside these, you will undertake a large research project and academic poster on your own area of interest.

What will this course cost me?

For information about course fees please refer to our [Fees and Financial Support](#) pages.

How will I be assessed?

The course is assessed through a range of assessments including written assignments, poster presentations, seminar presentations, portfolios, exams and project work.

The course is mostly assessed through individual assessments, but elements of group work may be incorporated to bring in a real-world learning experience. At Level 6 you are also required to complete a dissertation project.

Our variety of assessment methods, providing students with an increased chance of success, have been commended by external examiners.

Where can it lead to?

Recent graduates have successfully furthered their careers in a wide variety of animal-related positions including as Canine Hydro Therapists, Welfare Officers, Nutrition Specialists, Animal Technicians and College Lecturers.

Others have gone on to further education in the animal sciences in areas such as animal welfare, physiotherapy and veterinary nursing.

What are the entry requirements for this course?

Applicants should have completed a FdSc or HND Level 5 programme in an animal science related field. Applications from mature students or people seeking part-time study opportunities would be welcomed.

Please note: Credits gained from the Level 5 qualification must not have already been used for another degree top-up

International Students

If you are an international student looking to study this course please contact our [Student Services team](#) to check the entry requirements for details on country specific entry requirements.

Good to know

The UCAS Code for this course is D301.

Visit this course on our website: <https://www.moulton.ac.uk/courses/pbsas/animal-behavioural-science-and-welfare-top-up-bsc-hons-level-6>

For further information please contact the college: <https://www.moulton.ac.uk/contact>